

revamp
REVAMP

P r o f e s s i o n a l



USER GUIDE

PROGLOSS 3750

PROFESSIONAL 2500W DRYER

DR-3750

FEATURES

1. Smoothing concentrator nozzle
2. Cold shot button
3. High torque professional DC motor
4. Temperature heat control
5. On/off & speed control
6. Easy-clean filter
7. Hang-up loop

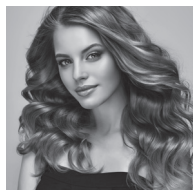
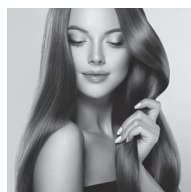


SUPER SMOOTH IONISER

The PROGLOSS 3750 uses a ceramic and infrared generating grille for kinder drying and styling.

Smooth, sleek styles

Divide your hair into several neat sections. Hold the dryer above the hair so that the airflow is directed down the hair shaft from root to tip. This will help close the cuticle. This will be further enhanced using a brush. Move the dryer together down the hair shaft to the hair ends. Press and hold the cold shot button to cool down the section and set the style.



Voluminous styles

Divide your hair into several neat sections. Using a brush or fingers, lift the hair up and at root and away from the scalp. Dry the hair underneath to build up volume. Press and hold the cold shot button to cool down the section and set the style. Alternatively, turn your head towards the floor so the hair falls away from the scalp and hold the dryer upwards and dry towards your scalp.

PROGLOSS™ SUPER SMOOTH OILS

Every product in the Revamp haircare range is infused with PROGLOSS™ SUPER SMOOTH OILS - enriched with Argan, Keratin and Coconut for ultimate smoothness and shine.

SMOOTHING CONCENTRATOR

The concentrator nozzle allows you to direct and focus the airflow of the hairdryer for more precision in styling and drying. Direct the concentrator nozzle at your hair, allowing a few centimetres between the nozzle and hair. If you use a rounded brush, pull as tightly as possible to get the best results whilst styling.

To use the dryer with the concentrator, ensure the dryer is switched off and cool, then attach the concentrator by firmly clicking it onto the dryer barrel head.

While styling the hair using the concentrator, please be aware of the increased temperature of the airflow of the hairdryer. Please use a low/medium heat setting when using.

INSTRUCTIONS FOR USE

- Wash your hair as normal and squeeze out excess moisture with a towel and comb through to detangle.
- Apply heat protection spray before drying.
- Plug the product into a 220-240V mains power supply.
- To quickly blast dry hair, use without a nozzle. For precision drying, use the smoothing concentrator nozzle.
- To use the dryer without the concentrator, simply press the speed switch on the handle to turn on the product (4).

- Adjust the heat and speed switches on the handle to the desired setting (higher heat and speed settings for drying and lower heat and speed settings for styling):

SPEED		HEAT	
0	Off	⤵	Low heat
I	Medium speed	⤵⤵	Medium heat
II	High speed	⤵⤵⤵	High heat (for faster drying)

- To use the Cold Shot, press and hold the button at the front of the hairdryer handle. This will cool the hair and help to set the style.
- After use, switch off the dryer by switching the speed setting to 0, unplug and allow to cool before storing away.

Follow us on www.revamphair.com for the latest hair tips and advice.

CLEANING & MAINTENANCE

- If you just use the appliance, switch it off, unplug from the mains and allow to cool fully before cleaning.
- Wipe over all surfaces using a soft damp cloth. Do not use harsh abrasives or cleaners.
- Do not immerse the appliance in water or any other liquid.
- Ensure all parts are dried thoroughly with a soft towel before reusing.
- To prevent cord damage, do not wrap the cord around the appliance, always store the cord loosely next to the appliance.
- Store in a cool dry place.


CLEANING THE FILTER

To maintain peak product performance and to prolong motor life, it is important to regularly remove dust and dirt from the rear grille and clean.

- To remove - Turn the rear-grille anti-clockwise and pull off.
- To clean - Clean with a soft brush and replace.
- To replace - Align the grille guides with the slots in the casing (on the dryer) and turn clockwise.

DO NOT USE APPLIANCE WITHOUT THE REAR GRILLE FILTER IN PLACE

IMPORTANT SAFEGUARDS

- This appliance can be used by children aged from 16 years and above. Persons with reduced physical, sensory or mental capabilities should not use this product. Persons with lack of experience and knowledge can use the product if they have been supervised/instructed and understand the hazards involved. Children shall not play with the appliance. Cleaning and user maintenance shall not be done by children unless they are older than 16 and supervised. Keep the appliance and cable out of reach of children under 16 years.
- WARNING:** for additional protection the installation of a residual current device (RCD) with a rated residual operating current not exceeding 30mA is advisable. Ask an electrician for advice.
- Always ensure the voltage to be used corresponds to the voltage stated on the unit before plugging the appliance into the mains socket.
- THIS APPLIANCE SHOULD BE UNPLUGGED FROM THE MAIN SUPPLY WHEN NOT IN USE.
-  **WARNING:** This appliance must not be taken into a bathroom. It should not be used near bath-tubs, basins or any other vessels containing water.
- This appliance must not be used outdoors.
- Avoid allowing any part of the appliance to come into contact with the face, neck or scalp.
- In use, take care that the inlet and outlet grilles are not blocked in any way as this will cause the unit to automatically stop. Ensure the inlet grille is free from obstructions such as household fluff, loose hair etc.
- DO NOT USE APPLIANCE WITHOUT THE FILTER IN PLACE
- Do not use the appliance while drowsy or sleeping.
- Do not leave the appliance unattended while plugged in.
- Do not set the appliance down while still on.
- Do not operate with wet hands.

- Do not place the appliance on any soft furnishings or materials e.g. carpet, bedding, towels, rugs etc.
- Do not operate where aerosol (spray) products are being used or where oxygen is being administered.
- Do not use any extension cord with this appliance.
- Do not let the cord hang over the edge of a table or counter or let it come into contact with any hot surfaces.
- Do not carry the appliance by the power cord.
- Do not wrap the cord around the unit. Check the cord regularly for any sign of damage.
- If the power cord becomes damaged, discontinue use immediately and return the appliance to your nearest authorised service dealer for repair or replacement in order to avoid a hazard.
- Do not use the appliance if it is damaged or malfunctions.
- Do not use attachments other than those supplied with this product.
- Do not take the appliance apart. There are no serviceable parts inside.
- Let the appliance cool down before cleaning and storing away.

3 YEAR GUARANTEE

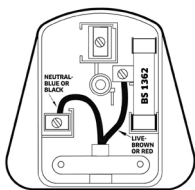
FKA Brands Ltd guarantees this product from defect in material and workmanship for a period of 3 years from the date of purchase, except as noted below. This FKA Brands Ltd product guarantee does not cover damage caused by misuse or abuse; accident; the attachment of any unauthorised accessory; alteration to the product; or any other conditions whatsoever that are beyond the control of FKA Brands Ltd. This guarantee is effective only if the product is purchased and operated in the UK / EU. A product that requires modification or adaptation to enable it to operate in any country other than the country for which it was designed, manufactured, approved and / or authorised, or repair of products damaged by these modifications is not covered under this guarantee. FKA Brands Ltd shall not be responsible for any type of incidental, consequential or special damages. To obtain guarantee service on your product, return the product post-paid to your local service centre along with your dated sales receipt (as proof of purchase). Upon receipt, FKA Brands Ltd will repair or replace, as appropriate, your product and return it to you, post-paid. Guarantee is solely through service centre. Service of this product by anyone other than the service centre voids the guarantee. This guarantee does not affect your statutory rights. For your local service centre, go to

www.revamphair.com/servicecentres

WEEE explanation



This marking indicates that this product should not be disposed with other household wastes throughout the EU. To prevent possible harm to the environment or human health from uncontrolled waste disposal, recycle it responsibly to promote the sustainable reuse of material resources. To return your used device, please use the return and collection systems or contact the retailer where the product was purchased. They can take this product for environmental safe recycling.



Plug (UK only)

If the plug on this appliance is damaged, it can be replaced with a BS 1363 plug, fitted with a 13A BS 1362 fuse. The recommended fuse for this appliance is 13 amp. Care must be taken when changing the plug. If in doubt, contact a qualified electrician.



SALON BRITISH BRANDS

Revamp is a trademark of Salon British Brands.
 Distributed in UK by FKA Brands Limited, Somerhill Business Park,
 Tonbridge, Kent TN11 0GP, UK / Tel: 01473 874016
 EU Importer: FKA Brands Ltd, 29 Earlsfort Terrace, Dublin 2, Ireland
 Via Giosuè Carducci 125, 20099 Sesto S. Giovanni, Milan, Italy / Tel: 0039 0236006064
csupport@revamphair.com
 IB-GSDR3750-0523-01